

Emergency Medical Teams

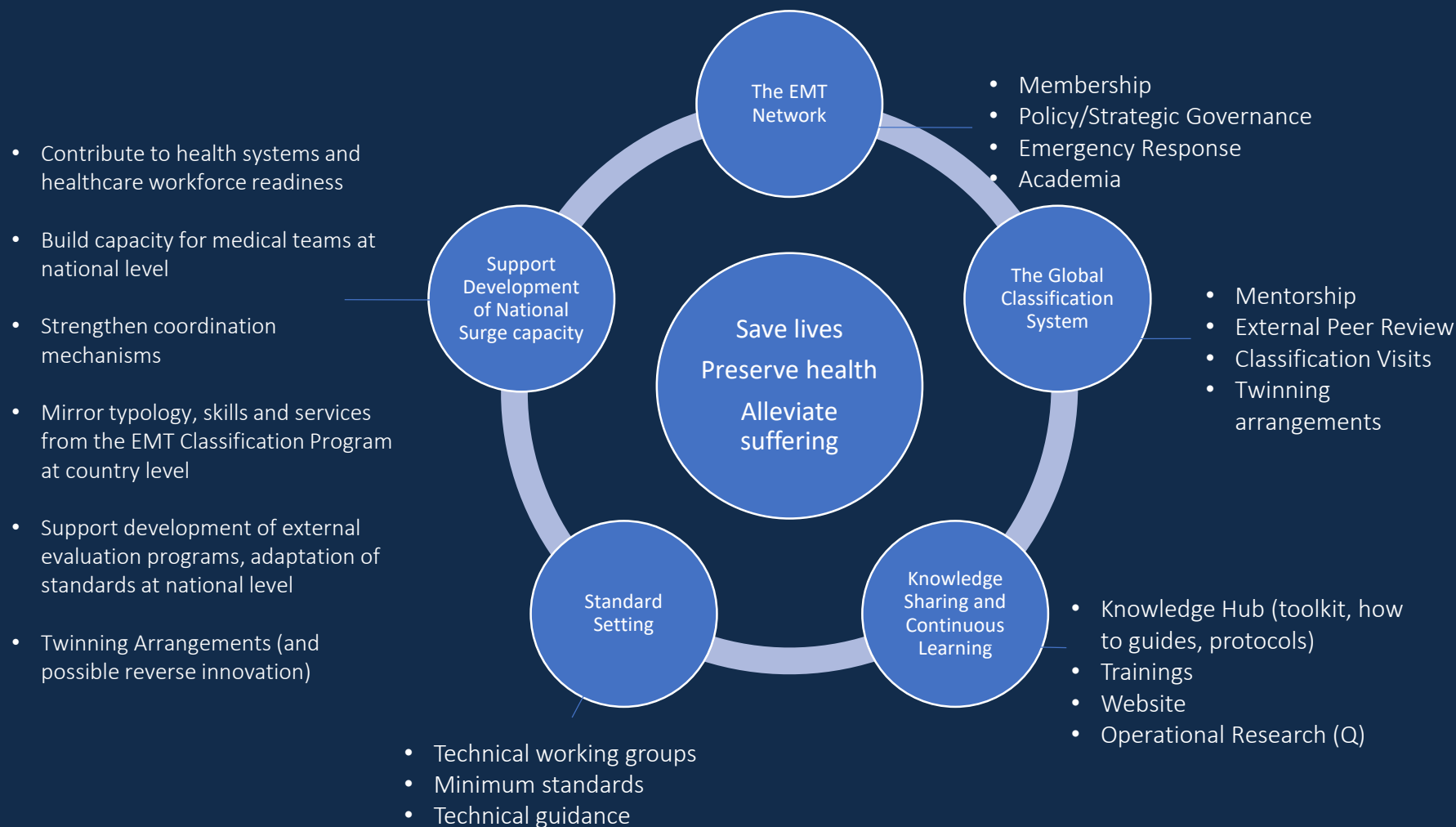
Health care surge capacity during emergencies

EMT Definition

“Groups of health professionals and supporting staff, aiming to provide direct clinical care to populations affected by disasters or outbreaks and emergencies as surge capacity to support the local health system. They include governmental (both civilian and military) and non-governmental teams.”



EMT Quality Management Framework



Global EMT Classification

- ✓ Improve quality, timeliness & predictability EMTs deployed in emergencies
- ✓ Creation of a Global Registry of EMTs willing to respond to emergencies & enhance coordination
- ✓ Facilitate operationalization of minimum standards by EMTs
- ✓ Minimize burden & support affected Health Systems



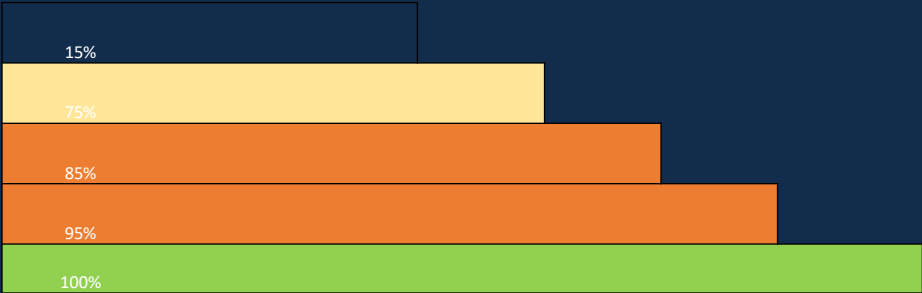
Classification process

GENERAL PROCESS

Total percentage is calculated based on the following rate of completed pathway

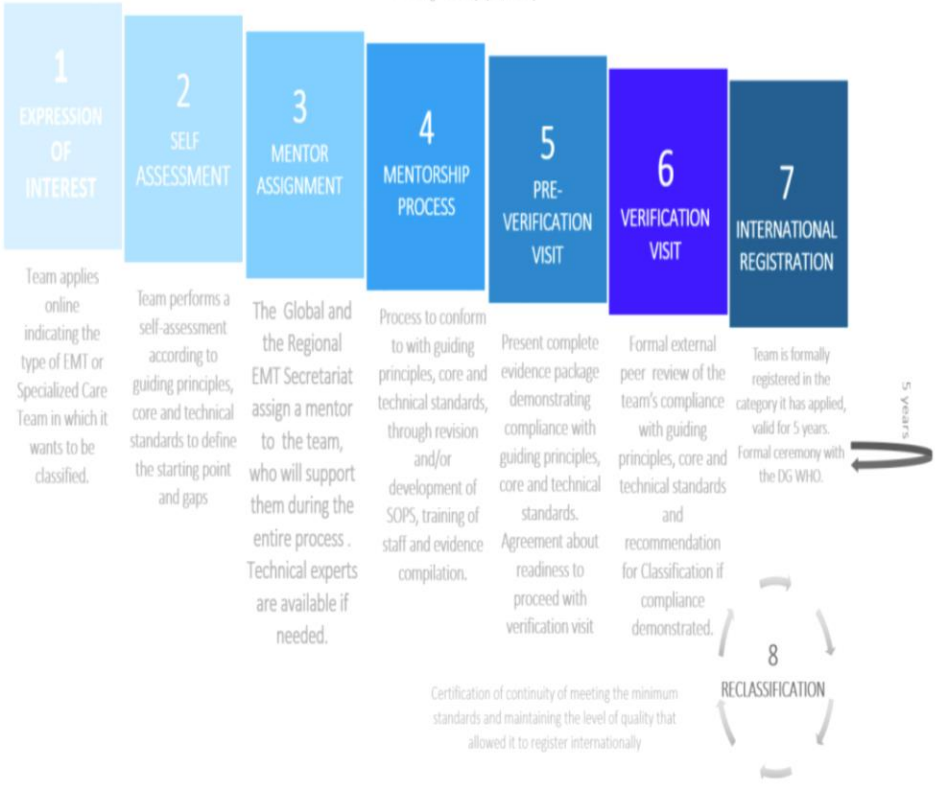
1 Expression of Interest	2 Self Assessment	3 Mentor Assignment	4 Mentorship Process	5 Pre-Verification Visit	6 Verification Visit	7 International Registration

5%	5%	5%	60%	10%	10%	5%
----	----	----	-----	-----	-----	----

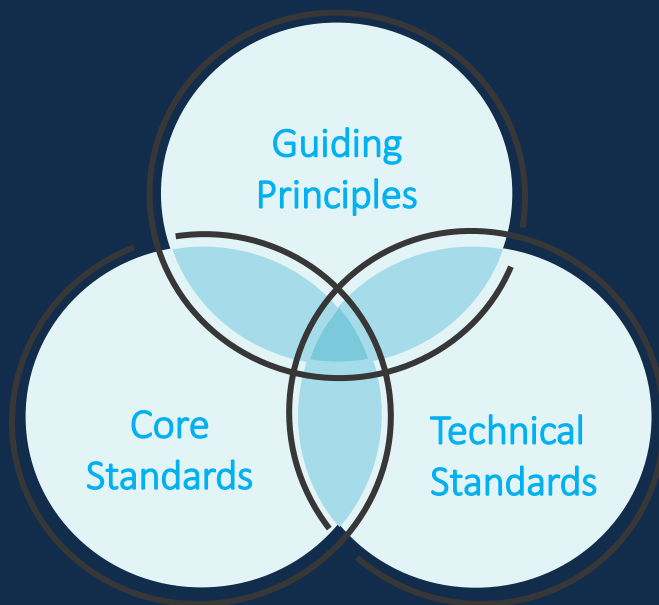


Overview of the Global Classification

The eight-step pathway



Verification Criteria



HR & Team management



Clinical capability & capacity



Medical records & reporting



Operational capability & capacity



Activation plans



Team health & Welfare

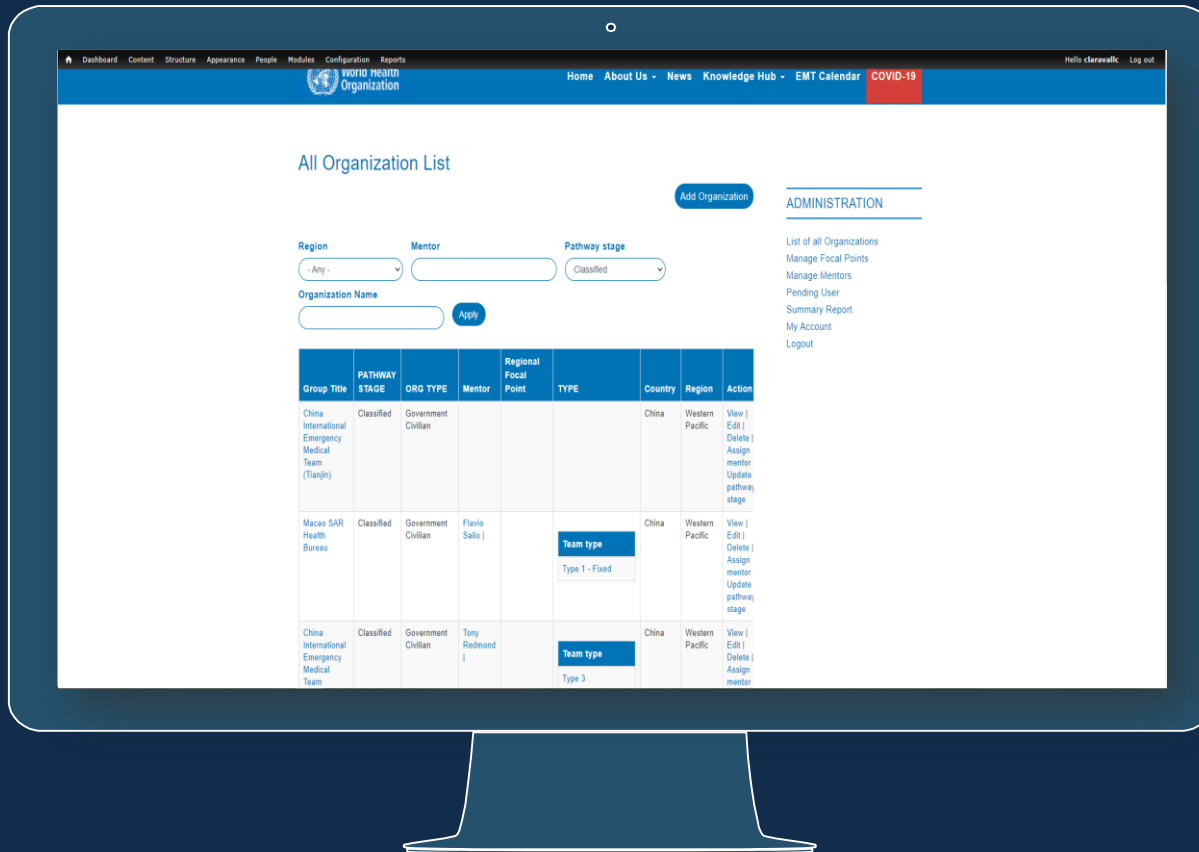


Training & Exercise



Deployment history

EMT Website



- Portal for registration to the Classification process
- Directory of Classified teams and of teams in process
- Knowledge hub of all technical standards, publications, and training materials



- Alert notification via listserv to whole EMT network
- Offers of assistance sent via email
- Alert system linked to website planned for 2021/2022

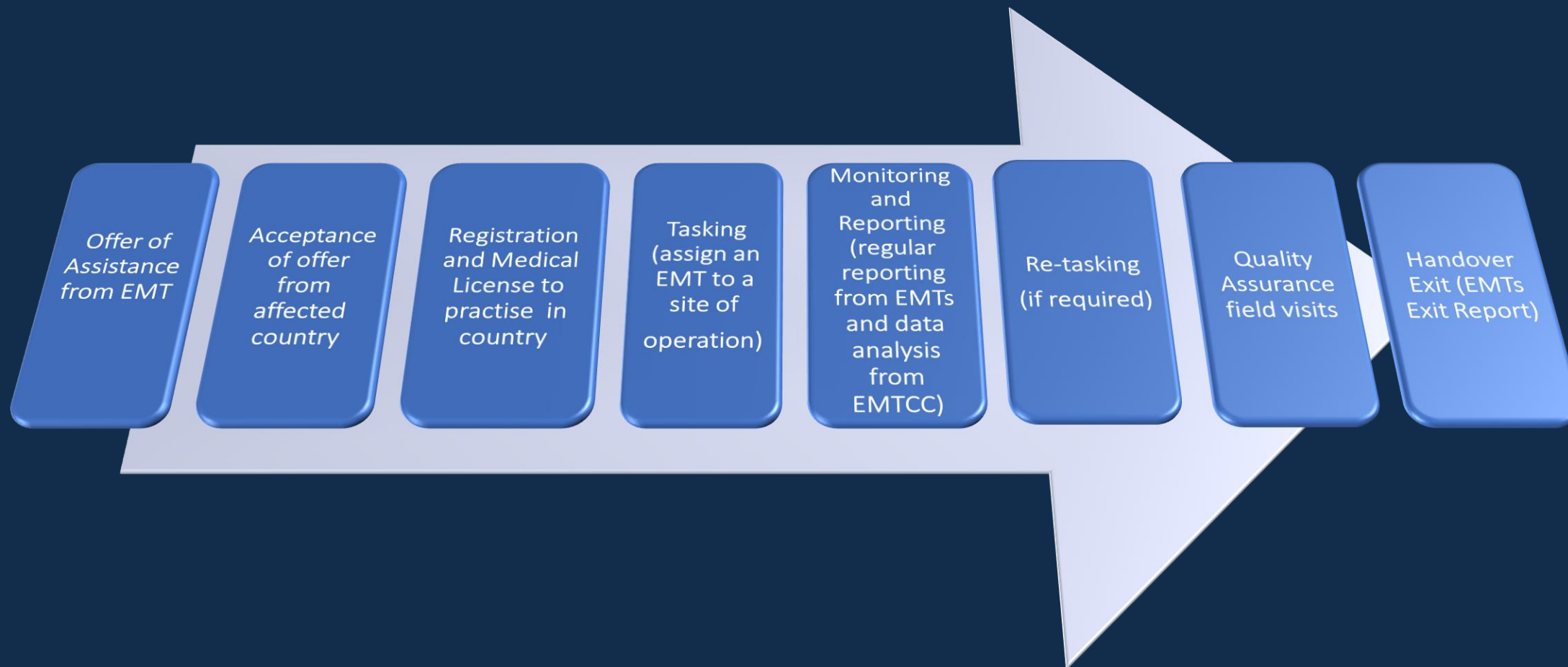


DEPLOYMENT PROCESS

A 5-STEP PROCESS



EMTs Deployment Cycle



EMT

EMERGENCY MEDICAL TEAMS IN COVID-19



Over one hundred and fifty EMTs and focal points worldwide are working closely with the EMT Secretariat which is continuously engaged in monitoring, guiding, and facilitating national and international COVID-19 response operations.

105

EMERGENCY MEDICAL
TEAMS INTERNATIONALLY
DEPLOYED



>900

NATIONAL TEAMS
MOBILIZED USING THE
EMT METHODOLOGY



**24,232 beds for
augmentation and
over 11,500 front
line responders
trained**

*THESE FIGURES ONLY INCLUDE
INTERNATIONAL DEPLOYMENTS



13

NEW DOCUMENTS AND
GUIDANCE CONTRIBUTED
AND CREATED



Lessons learned

- Constraints with host server and CMS
- Resources required to maintain and sustain
- Access for the general public vs network
- Information update

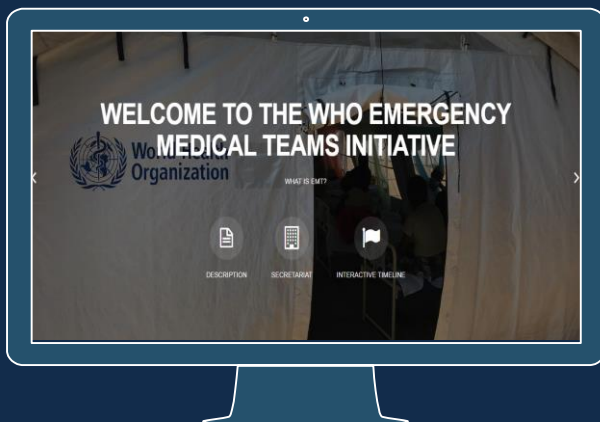
Steps forward

- Automated alert system embedded in EMT website
- Roster alert for EMT surge experts
- Internal system for complete EMT deployment cycle
- HQ dashboard for EMT classification and operations
- Emergency dashboard for coordination cells
- EMT country profile database

Thank you

Any questions?

For more...



<http://extranet.who.int/emt/>



saliof@who.int or EMTeams@who.int